

**HOW TO BECOME AN  
AWESOME  
ORGANIZATION  
HAVING POSITIVE  
IMPACT  
WORLD**

**THE AMSTERDAM MASTERCLASS**

# THE CLASS

This class is designed with the intention to be practical and stimulating. It is built on the components of **play, connect** and **act**. After this day, you will have gained practical examples, tools and ideas to bring these insights and practices into your own context.

We believe it does not need any knowledge upfront, only openness, curiosity and the commitment to be present.

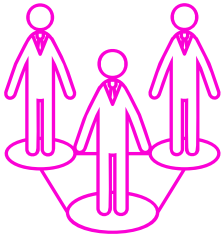
We are all experienced on the subject, having worked and pioneered full-time in the NEW WORK space the past 7 years, which includes a wide range of practices.

We have investigated for you, what is working and what is not.

We brought this together in the concept of the **#AdaptiveOrg**.

A concept, which allows every organization to be unique rather than fitting into a specific model or a certain way of doing things.

Join us to learn, observe, exchange, interact and to let yourself be inspired!



## BLOCK I

### SELF-MANAGEMENT

WHY SELF-MANAGEMENT HAS SO MUCH POWER IN A COMPLEX WORLD.

#### TAKE-AWAY:

- A template for self-managed solution designs - "activation process"



## BLOCK II

### IMPACT VS. PURPOSE

WHY THE DIFFERENCE BETWEEN PURPOSE & IMPACT MATTERS.

#### TAKE AWAY:

- Tool "Impact business model canvas"
- A free of charge workshop design



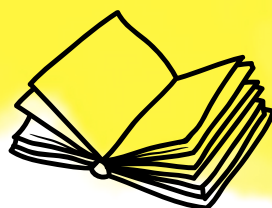
## BLOCK III

### HOW TO DEVELOP MINDSET

WHAT MAKES AN ADAPTIVE MINDSET.

#### TAKE AWAY:

- Tool "Inner Compass" with a set of mental models



**WORKBOOK INCLUDED**

# BLOCK I: SELF-MANAGEMENT

The working patterns behind successful self-management examples in a complex world.

How to get successfully started.


Dissolving self-management myths.

Maturity levels in self-management

## TAKE AWAY

- Understanding the simplicity behind self-management
- Method: As part of our Workbook you get the "Activation Process" Design template

# BLOCK II: IMPACT VS. PURPOSE



Distinction between Purpose & Impact

Science-based perspective on purpose


Introduction to the "Business Impact Model Canvas"

Case study by Tine Bieber about the flip side of the purpose movement

## TAKE AWAY

- "Business Impact Model Canvas"
- A free of charge workshop design

# BLOCK III: HOW TO DEVELOP AN ADAPTIVE MINDSET



What makes an adaptive mindset and why is it so important?

How developing a mindset is often going wrong.

The code behind a successful mindset change (evidence-based).

How to develop an adaptive mindset.

## TAKE AWAY

- Understanding the role of the mindset in change and transformation
- "The Mindset Code"
- Tool: "Inner Compass" with a set of mental models for an adaptive organization

# THE LOCATION

**Four Elements Hotel,  
Bert Haanstrakade 1074,  
1087 HJ Amsterdam**

<https://fourelementshotel.com>

The Four Elements hotel is an energy-neutral hotel that is dedicated to be 100% sustainable in its actions. Our lunch will consist of local foods and our workshop room will be by the water to add an extra sparkle. During the break, you will have the opportunity to take a deep breath while walking along the Markenmeer and visit Ijburg Beach.

Learn, enjoy, connect and get inspired!



Ijburg Beach



The Hotel

# EXTRAS

## PEER-TO-PEER METHODOLOGY

This is a course based on peer-to-peer methodology with maximum interaction, which creates a high learning environment.

## SELF-TRUST TO ACT

You will leave with knowledge and stimulation that gives you the needed self-trust that empowers you to integrate these learnings into your context.

## COMMUNITY OF PRACTICE

The network of peers you will be connected with by the end of the day will stay active in having facilitated check-ins after the masterclass as well.



## **DATE & TIME:**

**3rd of May 2023,  
10.00 AM - 5.00 PM**

## **WHERE:**

**Four Elements Hotel,  
Amsterdam**

## **PRICE:**

**EUR 290.00 excl. VAT**

**EUR 390.00 excl. VAT**

**[BOOK HERE](#)**

## **CONTACT:**

**hello@adaptive-org.com**